



Photo provided by Digital Art Co.

Annual Report 2020

The Chaffee County Community Foundation uses philanthropy and collaboration to act as a catalyst to build a more connected and resilient Chaffee County.

Table of Contents



Photo provided by Digital Art Co.

	Page
Table of Contents	1
Letter from Executive Director & Board Chair	2
Emergency Response Fund	3-4
2020 Grantees	5
Pivot 2020 Conference	6
Food Access Cohort	7
Fiscal Sponsorship	8
Founding Circle Donors	8
2021 & Beyond	9
Financials	10-11
Donors & Donations	12
Donor List	13-15

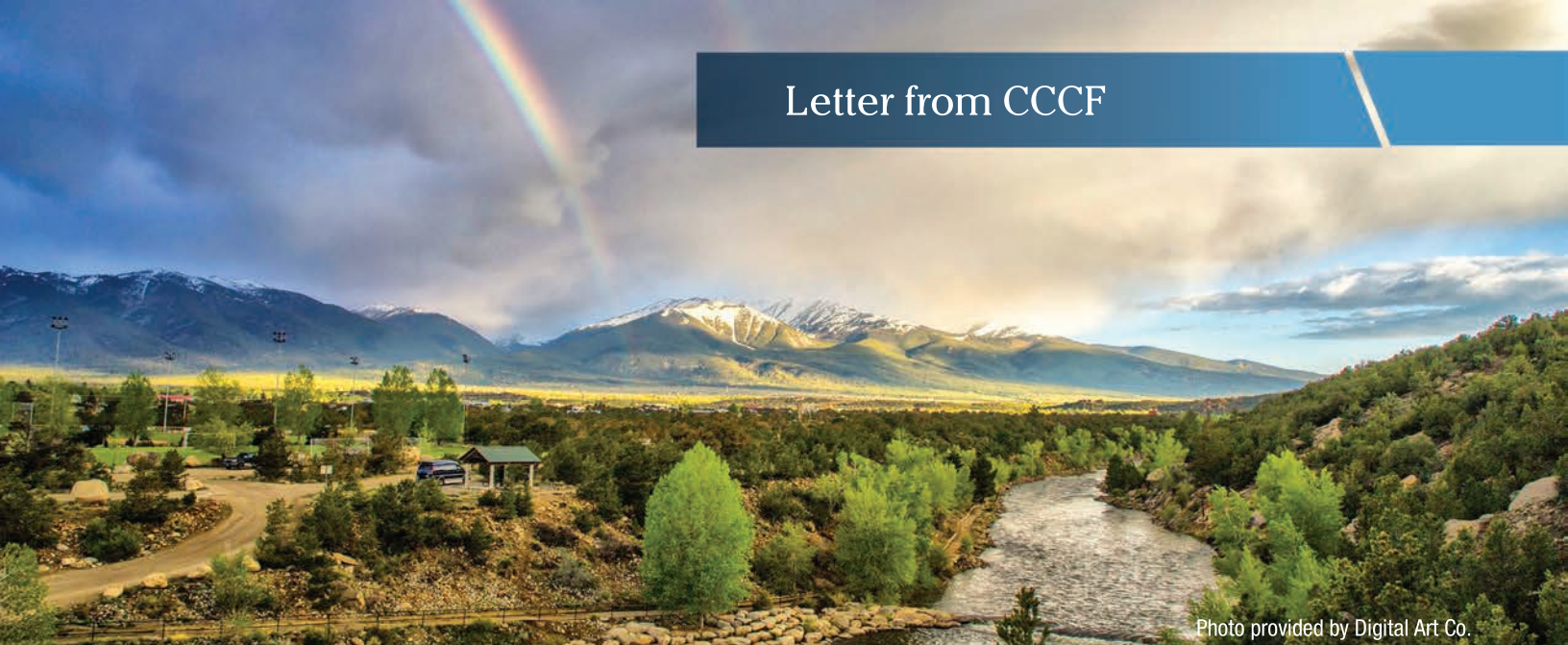


Photo provided by Digital Art Co.

Dear Chaffee County community,

Chaffee County Community Foundation (CCCF) is a young organization formed in 2018 by a small group of residents who took a community conversation about a gap in our community services and created the CCCF.

In developing the Foundation, we made it a priority to sit down for coffee or a drink with over 1,000 individuals from around the county and listen to their perspectives about the community – challenges, opportunities, assets and shortfalls. We then asked each person, “what role do you think CCCF should play?” Common themes arose quickly: convening, coordinating, leading, staying neutral, not competing, fundraising. However, a common question was asked of each of us: “Why does Chaffee County need a community foundation?” It was, and is, a fair question and one that you’ll see was answered in 2020 as **CCCF raised and managed almost two million dollars for Chaffee County**, which we successfully and professionally distributed back to individuals, families, businesses and nonprofit organizations in the community to meet demonstrated needs.

For the first 18 months of its life, CCCF focused on establishing priorities and an operational framework that could anticipate future needs of the community. Little did we know that 2020 would present us with the opportunity to test our commitment to immediate and appropriate responses to community needs during a world-wide pandemic. We met our January 2020 goals of successfully managing three separate community grants programs, providing Chaffee County’s first-ever nonprofit conference, and increasing giving to Chaffee County’s nonprofit organizations on Colorado Gives Day. Our preparation for crisis services served us well: throughout 2020’s pandemic, we demonstrated what a community foundation can accomplish. So as a salute to all of our Board members, staff and volunteers who contributed to aiding the community, we present CCCF highlights of 2020 in this annual report.

The true hero of 2020? The Chaffee County Community. The leaders and everyday philanthropists (**over 800 donors gave to and through CCCF this year**) in this special place all pulled together to demonstrate our capacity to care for each other. CCCF was not THE reason people gave. However, our mission says we are to be a catalyst – to use the power of philanthropy for the common good. This concept is what we struggled to convey in early conversations with folks. Now, it couldn’t be clearer.

And so, on behalf of the CCCF Board of Directors and staff, thank you for your support, both in 2020 and in the future. We are thankful to be on this journey with you.

Sincerely,

Joseph Teipel
Executive Director

Dr. Edward Cooper
Board Chair

Emergency Response Fund

Photo provided by Digital Art Co.

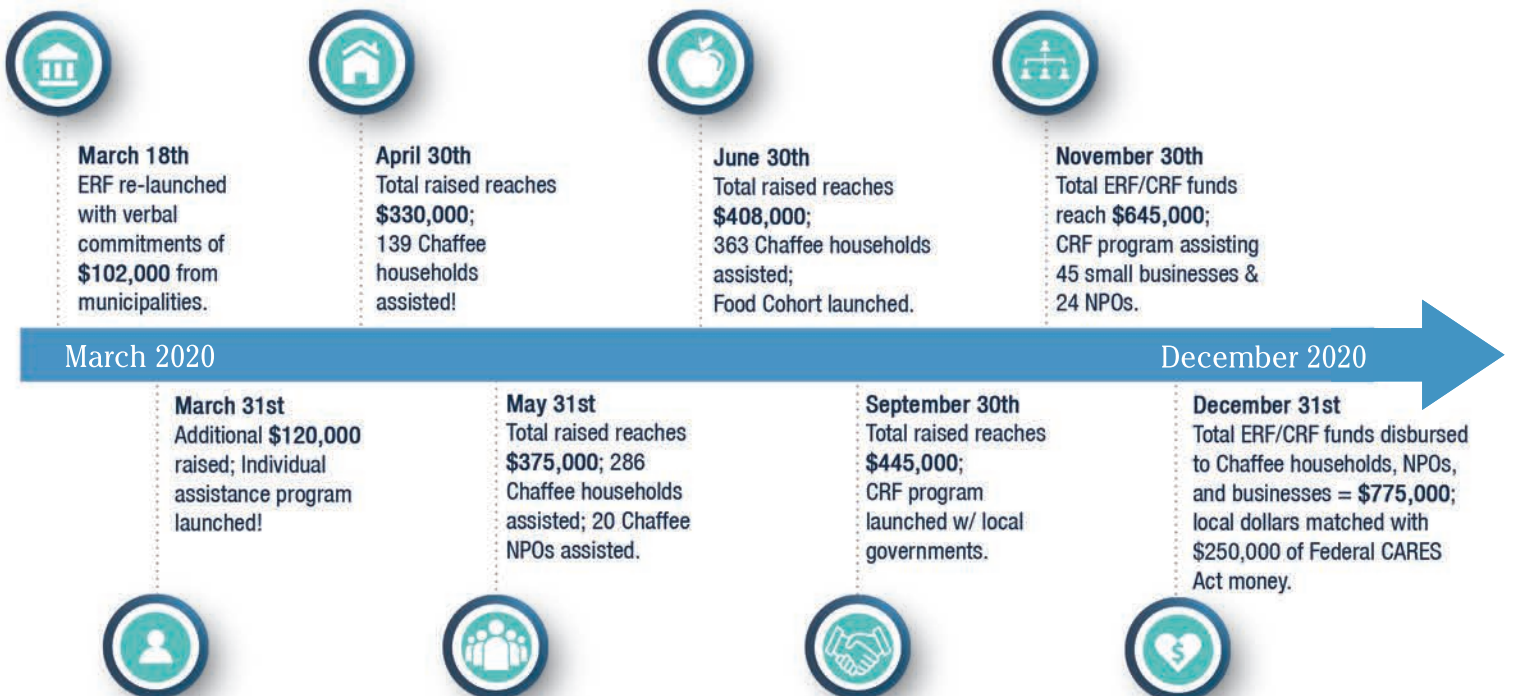
"I really just want to express my gratitude for the assistance we received. It really made all the difference in the world because without it, we'd be homeless. I'm not exaggerating or being hyperbolic. Had we not gotten help from the foundation, as of today, we'd have been homeless. There aren't words adequate to describe our appreciation."

-Salida ERF recipient

Envisioned as a permanent fund and resource for Chaffee County, the Emergency Response Fund (ERF) was launched during the Decker Fire in October 2019. While it garnered some local contributions, other local, state, and federal resources were adequate to meet the immediate needs related to Decker, and the contributions were carried forward in the ERF into 2020.

The day COVID-19 forced widespread economic and community shutdowns, CCCF re-launched the ERF in partnership with the City of Salida, Town of Buena Vista, Salida Schools, and the Board of Chaffee County Commissioners all putting forward matching challenge grants to spur community giving. Little could we or our municipal partners have known how deep both the philanthropic response and the community needs would turn out to be.

2020 Emergency Response Fund Timeline



Emergency Response Fund



Photo provided by Digital Art Co.

The incredible outpouring of financial support was matched by the 'all hands on deck' sentiment of our Board of Directors. CCCF at the time had a single full-time position. Yet within two weeks of 'go' we had a fully functioning individual assistance application and review program processing hundreds of applications all with volunteer (i.e. board members!) time. This is the beauty of a community foundation – we exist for the common good, whatever the needs are, and whatever needs to be done, we step up.

In late 2019 CCCF was projecting a working budget of about \$100,000 for 2020. However, with the generous giving of our donors, challenge grants by the municipalities and Salida Schools, contributions by a number of supporting philanthropic organizations, and federal CARES dollars received when CCCF leveraged local funding raised, CCCF managed over **\$1.8 million**. Every penny of it for Chaffee and its wonderful community.

We activated our Emergency Response Fund in mid-March as the shutdown started and ***have been able to raise and give back more than \$1,100,000 dollars to individuals, families and organizations.***

Local governments were the first to chip in, offering \$102,000 in challenge grants to spur community giving. CCCF then brought in more than \$350,000 in individual and business support in addition to administering \$400,000 in small business and nonprofit federal relief dollars. Finally, CCCF was able to leverage all these gifts to secure an additional **\$250,000 in federal CARES Act dollars.**

CCCF is continuing to deploy its ERF resources to support the Chaffee community in 2021 and beyond.

\$1.189 M
TOTAL RAISED

\$775,000
GRANTED OUT TO

30+

NONPROFIT ORGANIZATIONS

45

SMALL BUSINESSES

300+

CHAFFEE HOUSEHOLDS

- Leveraged \$250,000 in federal funds for 2021 and beyond.
- For every local public dollar we were given for ERF, we raised an additional \$5.
- For every individual dollar we were given for ERF, we raised an additional \$1.30.

199 SOUTHERN END OF COUNTY
111 NORTHERN END OF COUNTY

Read some of the ERF stories at <https://www.chaffeecommunity.org/blog>

2020 Grantees

Photo provided by Digital Art Co.

CCCF is honored to have been a part of funding 163 grants to over 130 Chaffee entities in 2020. While the majority of these entities received some sort of COVID related assistance, others were funded to support their vital work in the county from the community grants of the Town of Buena Vista, City of Salida, and Sangre de Cristo Electric Association.

A Church	Creekside Gathering Place	Salida Chamber of Commerce
Achieve, Inc.	Currents, Inc.	Salida Circus Outreach Foundation
American Legion Post 55	Deer Mountain Community Organization	Salida Council for the Arts
Amicas Wood Fired Pizza	Deer Valley Ranch, LLC	Salida Hostel
Amigo Lodge LLC	Deerhammer Distilling Company	Salida Mountain Trails
Ark Valley Helping Hands	elevateHER	Salida Pregnancy Resource Center
Ark Valley Voice LLC	Elevation Beer Company	Salida Rotary Charitable Fund
Ark-valley Humane Society	Elk Mountain Guest Ranch, Inc.	Salida Sangha
Arkansas River Watershed Collaborative	Elkhorn Pizzeria LLC	Salida Senior Citizen, Inc. dba
Articipate	Empower Yoga LLC	Salida Community Center
Bangs Salon and Spa	FEDC WellSTART	Salida Sunrise Rotary Charitable Fund, Inc
Bill Dvorak's Kayak and Rafting Expeditions Inc	First Presbyterian Church	Salida-area Parks, Open-space & Trails (SPOT)
Boy Scout Troop 67	Foodshed Alliance	San Isabel Land Protection Trust
Boys & Girls Clubs of Chaffee County	Full Circle Restorative Justice	Sangres Art Guild
Brave Life Consulting	Greater Arkansas River Nature Association	Sangres Art Guild
Buena Vista Chamber of Commerce	Guidestone Colorado	Search & Rescue North
Buena Vista Heritage	Habitat for Humanity of Colorado in Lakewood	Settings Event Rental
Buena Vista Optimist Club	Heart of Rockies Anytime Fitness	Shakespeare in the Park
Buena Vista Pregnancy Center	High Country Fine Arts Association	Silver Ridge Lodge
Buena Vista School District	High Mountain Hay Fever Festival Association	Simple Lodge And Hostel
Buena Vista Young Life	High Side Bar & Grill	SOIL Sangre de Cristo
BV Hope	Historic St. Elmo and Chalk Creek Canyon Inc	Solvista Health
CALLIOPE! INC.	Howard Volunteer Fire Department	Sorelle Delicatessen Inc.
Caryn Crenshaw/Crenshaw Property Management	Howl Mercantile LLC	Soulcraft Brewing
Center for Independence	jalaBlu Yoga	Southwest Conservation Corps
Central Colorado Conservancy	Jumpin' Good Goat Dairy LLC	St. George Episcopal Church
Central Colorado Humanists	KHEN 106.9fm Community Radio	Starpoint
Chaffee County Amateur Hockey Association	Kim's Gym LLC	Surf Hotel
Chaffee County Childcare Initiative	Kirsten Fleming, LMT, NTS	The Alliance
Chaffee County Council for the Arts	Lake County Search and Rescue	The Blend at Buena Vista
Chaffee County Early Childhood Council	League of Women Voters Chaffee County	The Grainery Ministry
Chaffee County Economic Development Corporation	Lighthouse Ministries	The Manna House
Chaffee County Habitat for Humanity	Lighthouse Pregnancy Resource Center	The New Caring and Sharing
Chaffee County Public Health	Little Red Hen Bakery	The YogaTonic, Inc.
Chaffee County United Soccer Club	LJCC Services, LLC	Theresa Medrano/Heritage Daycare LLC
Chaffee Housing Trust	Mini-Blessings	Tres Litros Beer Company
CJ and Company Salon and Bodyworks (Polished Ends)	NAMI Chaffee County	Truth Has A Voice Foundation
ClearView Community Church	Neighbor to Neighbor Volunteers/The Chaffee Shuttle	Uptown Grill
Collegiate Peaks Chapter of Trout Unlimited	New Bees	Valley Assisted Living Inc.
Colorado Adventure Tours LLC	Operating Reserve	Valley Fellowship Church
Colorado Christian Mission Stations	Rio Trio LLC	Vanilla Pines Floristry
Colorado Compressed Gases	Rotary Lending Medical Aids, Inc.	Walden Chamber Music Society
Colorado Farm to Table, Inc.	Salida Aspen Concerts	Yoga Olas LLC
Colorado Sports Recycler	Salida Bike Company	
Corvus Clothing & Curiosities & Corvus Escape Room	Salida Business Alliance	

Pivot 2020 Conference



Photo provided by Digital Art Co.

CCCF held PIVOT2020 – Chaffee County’s first ever nonprofit conference. This twelve-hour conference was held in four sessions spread over four weeks in late summer.

Participants:

- Gained the perspective and tools to form a collaboration and resiliency mindset
- Discussed and learned about the impact of COVID-19 both locally and nationally and what changes to make as a result
- Formed new concrete relationships with other local organizations
- Had a voice in the future of fundraising and partnership here in Chaffee County



In June, in order to build the capacity and coordination of Chaffee County food access organizations, CCCF designed and implemented an innovative group-based grant program called the Food Access Cohort. Contrary to a traditional grant application and award model, the Food Access Cohort (FAC) was modeled around the idea that the grantees will work together to increase coordination and collaboration to meet immediate community needs and ensure all Chaffee families and individuals have access to nutritious food. In addition, grantees worked together to design and implement projects of their choosing that would build their capacity to respond to community needs. The cohort was facilitated by CCCF, but grantee-led. This model ensures equity among organizations while elevating the role of the organizations as the issue experts, instead of CCCF.

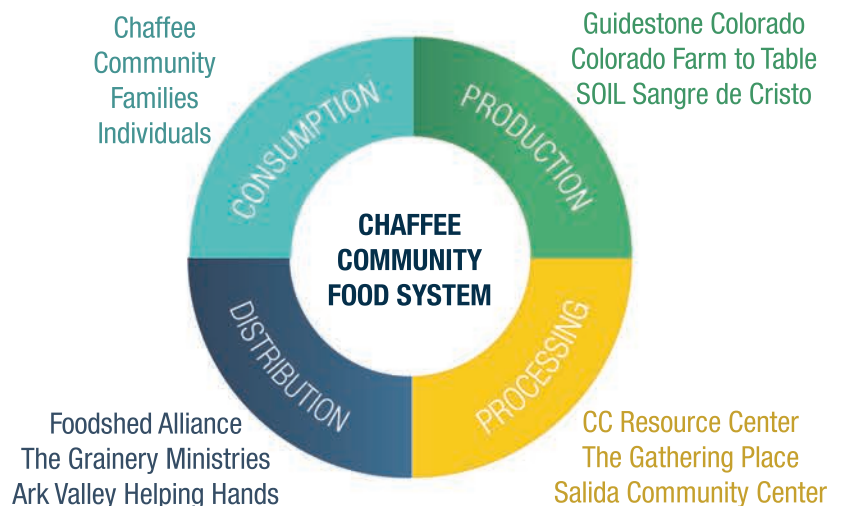
Participating Organizations:

- Guidestone Colorado
- Colorado Farm to Table
- Chaffee Community Resource Center
- SOIL Sangre de Cristo
- The Gathering Place
- Salida Community Center
- The Grainery Ministries
- Foodshed Alliance
- Ark Valley Helping Hands

The cohort identified two projects to pursue:

Food Systems Asset Map

A map of all food resources and assets (farms, food banks, education, etc) in the county along with information on how to access those resources. In addition, this map will include a 'backend' where the service providers have more detail on each other's operations so they can best refer folks to the appropriate place for help.



Shared Volunteer Database

This project will build and launch a shared volunteer database solution for Chaffee County residents and organizations. Many folks want to give back in ways that align with their passions and lifestyle. Many organizations or projects are looking for folks to volunteer. This project will connect the two by elevating a single county-wide portal at which individuals can sign up to volunteer thereby entering their information into a shared database. Then, approved organizations can log in to the database to filter through and contact volunteers who fit their project or program needs.



Fiscal Sponsorship

Photo provided by Digital Art Co.

Undergirding CCCF's mission is building the capacity of others so they can, in turn, impact the common good. One of the most straightforward ways we do this is by providing fiscal sponsorship to community groups, projects, and initiatives. The road to becoming an independent 501c3 is a long one – many times lasting more than a year and demanding significant attention, administration, and costs that often slow progress for community groups who seek to address community needs. In addition, many times building a stand-alone organization is not the appropriate long-term structure for these groups.

CCCF offers its 501c3 designation as an umbrella for projects and initiatives without their own formal entity type. In some cases, this lasts for the life of the project, and in other cases CCCF supports these groups as they pursue their own 501c3 designation.

CCCF was the fiscal sponsor for these groups in 2020:

- Buena Vista Single Track Coalition – now their own entity!!
- Friends of Salida Skatepark
- Truth has a Voice Foundation
- Envision Chaffee County
- Chaffee County Amateur Hockey Association
- Healthy Habits Foundation

CCCF's Founding Circle Donors

The Chaffee County Community Foundation was originally incorporated in 2006, however the organization foundered and fell dormant for lack of resources. These generous donors stepped forward in 2018 to ensure the same fate didn't befall CCCF. These visionary individuals and families recognized the powerful role and impact a community foundation could have in the county and stepped forward to underwrite the first two years of its launch and operations.

Evelyn and Keith Baker
Katy Welter & Rick Bieterman
Donna and Matthew Maloney
Anita and Ed Cooper
Libby Fay

Judy Hamontre
Wendy Hall
Sydney and Russ Schnurr
Merrell and PJ Bergin
Roger and Mary Beth France

2021 and Beyond – Join Us

With 2020 behind us, CCCF is working on many exciting initiatives and remains devoted to its mission of acting as a catalyst and convener for the common good. Here are four of our priorities for 2021 that will not only address acute needs in our community, but will build a stronger, more resilient Chaffee County far into the future. **We need your support! Learn more about these initiatives and donate to support our work at www.chaffeecommunity.org.**



Stewarding & Deploying the Emergency Response Fund

As noted above, CCCF was successful in leveraging local dollars to resource the ERF – entering 2021 with over \$350,000 in this fund! In order to meet ongoing individual needs stemming from COVID, CCCF partnered up with the Chaffee Department of Human Services (DHS) to launch a **\$50,000 individual assistance program**. In addition, CCCF's Board of Directors is working with each school district to assess how COVID-related budget shortfalls may be addressed in with an ERF investment. More information at www.chaffeecommunity.org/erf.



Ensuring Jane's Place Breaks Ground

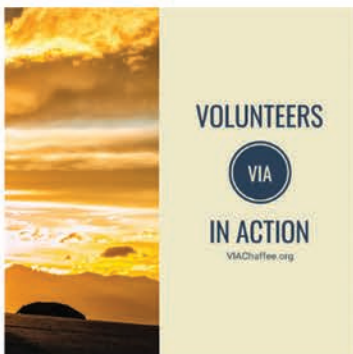
This innovative housing and nonprofit space development proposed for a currently-vacant lot in Salida is the epitome of how CCCF can spur and convene creative thinkers and resources to address one of Chaffee County's more urgent issues – lack of attainable workforce housing. In honor of the late Jane Whitmer, this project will bring **17 adaptive and affordable housing units** to Salida while also directly serving our local employers and nonprofits. Learn more at www.chaffeecommunity.org/janesplace.

Chaffee COMMONS

BACK OF HOUSE SUPPORT
FOR CHAFFEE NONPROFITS

Launching ChaffeeCOMMONS

Chaffee Common Services is a unique and holistic back-of-house support program developed in response to local organizations' needs. This program seeks to take the administrative burden of running an organization off of the backs of Chaffee's nonprofits so that they can focus on what matters the most - **their mission**. COMMONS will enroll local organizations as members and in turn provide them with capacity building services and platforms like a county-wide volunteer portal, Board of Directors platforms, and discounts on insurance and office supplies. Learn more at www.chaffeecommons.org.



Volunteers In Action Chaffee

As mentioned above in the Food Access Cohort program overview, local organizations need help in myriad ways from volunteers. This county-wide volunteer portal will elevate the importance of volunteering locally and allow community members to see all the different opportunities to get involved. It will also allow organizations easy ways to engage and communicate with their volunteers. Learn more at www.viachaffee.org.

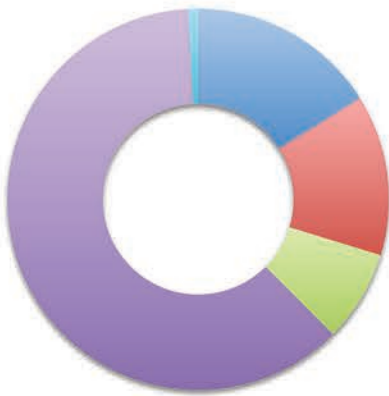
Financials

The Chaffee County Community Foundation uses detailed fund accounting through a purpose-build accounting system to track the resources entrusted to us. In 2020, CCCF managed 34 funds, including our own Operating Fund.

Our financials are presented in two primary sections 1) Every dollar we hold, or everything and 2) Our Operating Fund itself.

Everything Statement of Activities*

Revenue: \$1,856,228



- Operating Fund - \$298,908
- Donor Advised Funds - \$253,355
- Fiscal Sponsor Funds - \$144,526
- Field of Interest Funds (including ERF) - \$1,144,321
- Designated Funds - \$15,516

Expenses: \$1,358,491



- Operating Fund - \$195,243
- Donor Advised Funds - \$248,299
- Fiscal Sponsor Funds - \$124,899
- Field of Interest Funds (including ERF) - \$789,753
- Designated Funds - \$295

* These numbers reflect and include internal transfers between funds. Total gross receipts and expenses as per CCCF's 2020 form 990 are \$1,729,706 and \$1,231,969, respectively.

Everything Balance Sheet*

Beginning of year	\$ 320,890.00
Operating Fund	\$ 87,633.00
Donor Advised Funds	\$ 149,213.00
Fiscal Sponsor Funds	\$ 61,566.00
Field of Interest Funds (including ERF)	\$ 22,567.00
Designated Funds	\$ -

End of year	\$ 756,987.00
Operating Fund	\$ 190,868.00
Donor Advised Funds	\$ 92,468.00
Fiscal Sponsor Funds	\$ 81,193.00
Field of Interest Funds (including ERF)	\$ 377,135.00
Designated Funds	\$ 15,320.00

* These numbers reflect and include accrual based entries. Total beginning assets and ending net assets as per CCCF's 2020 form 990 are \$259,251 and \$756,987, respectively.

Operating Fund Statement of Activities

Revenue: \$298,408



- Donations - \$121,930
- Pass-through Grants - \$25,299
- Grants - \$88,644
- Earned Revenue - \$30,005
- Investment Income - \$2,020
- In-Kind - \$30,507

Expenses: \$195,243



- Program Services - \$62,342
- Personnel Costs - \$61,255
- Professional Fees - \$22,702
- Fundraising & Communications - \$6,727
- Overhead & Administration - \$11,959
- In-Kind - \$30,507

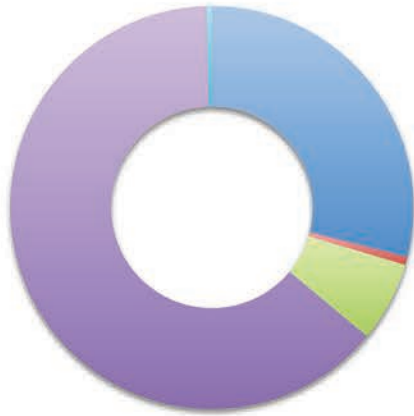
Operating Fund Balance Sheet

Beginning of year	\$ 87,633.00
Cash on hand	\$ 70,852.00
Accounts Receivable	\$ 1,000.00
Other Current Assets	\$ 19,041.00
Payables	\$ 3,260.00

End of year	\$ 190,868.00
Cash on hand	\$ 188,692.00
Accounts Receivable	\$ -
Other Current Assets	\$ 37,038.00
Payables	\$ 34,862.00

DONORS

The number of individuals or households who contributed during 2020. Note that one donor may have donated to multiple funds and therefore be counted multiple times.

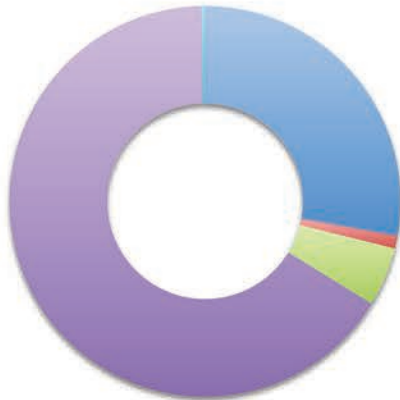


All Donors - 819

- Operating Fund - 270
- Donor Advised Funds - 6
- Fiscal Sponsor Funds - 60
- Field of Interest Funds (including ERF) - 592
- Designated Funds - 4

DONATIONS

The number of gifts given during 2020. One donor may have given multiple gifts, each one counted as a separate donation.



All Donations - 1,634

- Operating Fund - 455
- Donor Advised Funds - 17
- Fiscal Sponsor Funds - 80
- Field of Interest Funds (including ERF) - 1,077
- Designated Funds - 5

Photo provided by Digital Art Co.



Donors

Photo provided by Digital Art Co.

"I learn more and more every day of the things this community is doing to look out for each other. When I listen to the local radio news, it gives me so much joy and hope to live in this great little town. I thank CCCF so much for considering my application. I hope to get back to my meaningful work ASAP."

-Salida ERF recipient

2020 INDIVIDUAL DONORS

A and P Glaser
Aaron Derwingson
Absolute Bikes
Adam and Jirka Myers
Adelaide Leavens
Adele and Stephen Jackson
Aimee Tihonovich
Al and Sheryl Archuleta
Alan and Elaine Adams
Alex and Jen Britton
Alison Bessho
Alison Peticolas
Amber and John Daugherty
Amend Family
Angel of Mount Shavano VFW Post 3820
Ann Daniels and David Ross
Ann Marie Holen
Anne and Cary Tengler
Anonymous Donors
Anthony and Donna Miller
Anupa Wellness
April Obholz Bergeler
Ark Valley Libation Society
Arlene Shovald
Arnett / Lewis Families
Arthur C. Buono
Ashley O'Hara and Evan Brady
Attoma and Nottingham Household
Barb and Doug Brady
Barb and Halsted Morris
Barbara and Jim Rees
Barbara Wilder
Barbara Zucker
Barry Goldmuntz
Beanstalk Foundation
Becki Rupp
Becky and Scott Leonard
Becky Merklein
Benjamin Bowmaster
Betsy Neas
Beverly Van Kampen
Bigan Construction Co.

Bill and Janessa Almquist
Bill Urbanowski
Bliss Bags by Ananda Collective
Bob and Marilyn Box
Bob and Marjie Gray
Bobbie Swift
Bonnie Wiesel
Boyd and Patricia Clark
Brad and Michelle Whitney
Braden and Lynda Shelman
Braveheart Properties 9 LLC
Brenda and David Sebern
Brenda and Mark Wiard
Brian Andris
Buena Vista Roastery Cafe
Burlson and Tudor Household
Butch and Mo Butler
Cafe Dawn
Cailey McDermott
Cara and Mowry Household
Carol and Jim Blackwell
Carol and Jim Sanford
Carol and Mark Duster
Carol Smith
Carolyn Kuchinsky
Carolyn Nelson
Cary Carlson
Cate Hazlitt
Catherine Plotkin
Charlotte Evans
Cheryl and Earl Richmond
Cheryl and Jack Lee
Cheryl and Robert Moore
Cheryl Moore
Cheryll Faust
Chili Heads Glass & Vape
Chip and Wynn Dickenson
Chris and Emily Lansing
Chris B Miller
Chris Martin
Chris Oxford
Christina Giles

Christina King
Christina Randle
Christopher Porth
Christopher Preston
Christy and Ben Doon
Chuck and Terry Deveney
Chuck Rose and Jeannie Peters
Church of the Ascension
Cinda and Thomas Moore
Cindy Sasso
CKS Mainstreet
Clifford Mestel
Climax Molybdenum
Coe/Zehnder Household
Colorado COVID Relief Fund
Colorado Mountain College Foundation
Comfort Gas, INC
Committee to Re-Elect Keith Baker
Community First Foundation
Connie and Mike Smith
Connie Buskist
Conrad Nelson
Coreen Franklin
Corrine Fowler
Craig Sommers
Creekside Chalets
Crissey Smith
Csilla DePue
Curtis Legacy Foundation
Cyndi Rader
Cynthia J. Waskom
Dagmar Cushing
Dale and Susan Shoemaker
Dan and Elizabeth Downing Household
Dan and Kathy Daly
Dan Shore and Jill Flodstrom
Dana Amundson
Daniel Smith
Danielle Shelton
Darling Family
David and Dora Jean Earl
David Fulker and Nicky Wolman

David Wood
Debra Jackson
Deborah and Michael Brown
Deborah McCabe
Debra Brown
Delmar D Smith
Denise Knapp
Dennis Fischer
Dennis Radabaugh and Sally Waterhouse
Denny Arter and Tim Martin
DeShazo Family
Diane Alexander
Diane and Ray Lara
Dianne and Richard Maas
Diesslin Structures Inc.
Dina and Tim Ryan
Dinah and Roy Newton
Dixie Goldsby
Don and Pam Dubin
Donavon and Mandy Paschall
Donna & Matthew Maloney
Dorothy Distel
Douglas and Patricia Scott
Douglas Mendelson
Dow and Tanya Stewart
Drew and Lexi Elder
Drew Glaser
Dunleavy Family
Dustin Nichols
Dvora Kanegis
Ed and Anita Cooper
Ed and Bev Heppler
Ed and Judith Kinzie
Eileen Berry
Eileen Rogers
Elizabeth "Tish" Gobble
Elizabeth Fye
Elizabeth Glass
Elizabeth Koehler
Elizabeth Miller
Elizabeth Olson
Elizabeth Peuser

Donors

Photo provided by Digital Art Co.

"I didn't feel judged, I just felt cared for and cared about."
-Salida ERF recipient

Elizabeth Ritchie
Elizabeth S. Lewis
Eli Miocene
Ellen Marshall and David Harwood
Emily Roller
Eric and Linnea Simons
Eric Lindahl
Erin Geiser
Esther St.James
First Street Flooring On Third
Forrest Whitman
Fran Rulon-Miller
Francie and Tom Bomer
Frederick Lee
Gail and Kurt Keeley
Gary and Ann Mason
Gaye and Mark Jenkins
Gayle Davis
Gene Clarkson
Gene Milus
Gene Spesard
GLA Concrete Plumbing LLC
Grace Church of Buena Vista
Graham and Terri Fitter
Greater Arkansas River Nature Association
Greg and Mary Frauenhoff
Greg and Ruth Phillips
Greg Peak
Grover and Marla Ellwood
Guidestone Colorado
Gwendolyn Meythaler
Heather Barron
Heidi Alina
Helen Stergius
Henry and Ann Klaiman
Henry Netherland
Holly Fulton
Irv and Gloria Broudy
J Lane and C Montgomery Willson
J. Wright
Jack and Cheryl Lee
Jacy and Thomas Doumas
James and Jean Ann McPhetres
James Hight
Jan and Greg Justis
Jan and Rod McCabe
Jan H Schmidt
Jane Blackburn
Jane E Templeton
Janene and Willis Shuey
Janet and Robert Yinger

Janet Heinz
Janey Sarther
Janie and Stuart Allen
Janie Hayes and Jimmy Bisese
Jarvis Edward Hansford, DDS
Jay and Marilyn Moore
Jay and Mitzi Leaver
Jay C Close
Jean and Bill Dyer
Jeanne and Randy Herrick-Stare
Jeff and Ellie Padgett
Jeff and Kathy Keidel
Jeff and Rita Krasnow
Jeff Oxenford
Jeff, Jen, Jack & Lucy Glaser
Jenna Pfingston
Jennifer Singer
Jennifer Swan
Jeremy Weiss
Jesse and Melissa Truax
Jessica Eaddy
Jessica Wierzbinski
Jim and Candice Willut
Jim and Carolyn Barnett
Jim and Diane Baker
Jim and Molly Walker
Jim and Rose Seavey
Jim McKeen
Jo Boatright
Jo Caissie
Joan Pray
Joann Guattery and Jean-Pierre Lescure
JoAnn Sandra Weiland Lang Memorial
Jodi and Patrick Hardin
Jodie Snyder
Jody Bentz
Joellyn Mendelson
John and Marilyn Bouldin Family
John and Pam Heimbach
John Dodd
John Kearley
John Zeising
John Zuchowski
Jolene and Tom Weir
Jolyn C. Taylor
Jon and Teresa Roorda
Jonathan and Rachel Fast
Jonna and Randy Crane
Jordan Brown
Joseph and Ashley Teipel
Joseph Lyford

Joshua Yablonski
Joy and Randy Duprey
Joyce Peryam
Judy and Clay Edmands
Judy Hamontre
Judy Lynn
Judy MacKnight
Judy Reese
Julie Nania
K Hale Camp
Karen and Alan Robinson
Karen and Randy O'Hare
Karen and Reed Dils
Karen and Tom Milligan
Karena Fritz
Kat Jahnigen
Kate and Roger Coit
Katherin Hutchinson
Katherine Harvey
Kathleen Roman
Kathryn and Robert Garwood
Kathy Hoerlein and Scott Cragle
Katwin Hinerman
Katy and Casey Martin
Kayce Penrod
Keith and Evelyn Baker
Keith and Kay Krebs
Keith Cooper of Poncha Springs
Kelly Collins and Richard Gastelum
Kelly Landau
Ken and Kim Luedke
Kendall Lee
Kenneth Konopka
Kent and Mary Ann Davidson
Kent Strickland
Kevin Copping
Keyes and Mizer
Kim and Alan Schwarz
Kimberly Maddock
Kinsey Krupa
Kristen Hussey
Kristen Moeller
Kristen Peterson
Kym and Hayden Mellsop
Larry and Debbie Morris
Larry Kovacic and Cheryl Brown-Kovacic
Laura Onsgard
Lawton Eddy
Layne and Thomas Kottmeier
Lee Dodge
Lelia "Lee" Coveney

Leonard and Margaret Baldini
Leonard and Rhonda Davis
Leslie and Ken Matthews
Leslie Duran
Leslie Jorgensen
Libby Fay
Linda Lewis
Linda Osborne
Lindi and Steve Lewis
Lisa and Stephan Siegfried
Lisa Jones and Thomas Westrup
Lisa Rasmussen
Lisa Vornholt
Liz Porter
Louie's Ice Cream Shoppe
Louise Fish
Luz Stella Diaz-Porter
Lyn Berry and Jeanne Younghaus
Lynn and Marybeth Anderson
Lynn Glazer
Lynne Johnson
Maggie Tomko
Malcolm and Edith Sillars
Mallie Miles
Margaret Mahoney
Marianne Dennin
Marie Truitt
Marilyn Higgs
Marion Partridge
Marjo Curgus
Mark and Judy Dean Family
Mark and Sally Tameler
Mark and Susan Ceglowski
Mark and Yuen Harrold
Mark Collen
Mark Ottesen
Martha and Tom Bauman
Marty and Pat Glapa
Mary Alcorn
Mary and Steve Plumb
Mary C Reed
Mary Ebuna
Mary Hallman
Mary Terlep
Maryellen Reedy
Matt and Helene Watson
Megan Leesley
Megan Loebbaka
Megan Strauss
Melanie and Walter Roth
Merrell and PJ Bergin

Donors

Photo provided by Digital Art Co.

"We are incredibly thankful for this assistance. It's in disbelief to be in such straits and I must admit, never thought it possible. This help will be returned, I hope many fold in the future."

-Poncha Springs ERF recipient

Meta Alice Keith Bratten Foundation
Michael Westheimer and Elaine Wolff
Michael and Deb Hannigan
Michael and Diane Critchley
Michael Cademartori
Michael Fischer
Micki Thompson
Mike Henderson
Milton J. Francis
Mishmash Electric
Mon-Ark Shrine Club
Morgan Atkinson
Mountain River Credit Union
Nancy and Scott Anderson
Nancy Dunkin
Nancy Kay
Nancy Konvalinka
Nate & Kirsten Flint
Neale Miller-Ackley
Neil and Laurie Stiles
New Salida Masonic Temple Association
Nina P. Williams
Nita and Gene Stevens Family
Norma J Smith
Oren Dreeben
Ovid Nine Creative Lab
Paige Judd
Pam and Russ Warren
Pam Kelly
Pam Rathke
Pamela Judd
Patricia Brand Fisher and Frank Fisher
Patricia Duffy
Patricia Duletsky
Patricia Helmick
Patricia Hensley
Patti Fritsche Brennan
Paul Alexander
Paul and Colleen Blake Trinko
Paul and Terry Andrews
Paul Burke
Paul Vosburgh
Paula and Charlie Farrell
Paula and Wayne Lallier
Peggy Hiltner
Peggy Vold and C Jay Taylor
Pete Bond
Pete Swenson
Philip Blette
Philip Noble

Phyllis Lamson
Pressly Family
Pure Greens
Quinn and Julie Macleod
Rachel Amaru
Rachel Crocker
Rachele Vierthaler
Raemary Pedersen
Rainbow Autowash and Storage
Randy and Maartje Potterton
Rann and Vicki Morris
Ray Milstein
Rebecca Berry
Rebekah Crane
Renewable Energy Outfitters
Richard A Smith and M'Lynne Kenney
Richard Blake
Richard Kenshalo
Richard P. and Marjorie A. Allen
Richard Pautz
Rick and Auralea Carroll
Rick and Sue Ann Hum
Risa and David Jenkins
Rita and Christopher Leydon
Rob and Dee Dubin
Rob McMicking
Rob Teegarden
Robert and Marilyn Birney
Robert and Mary Ann Elliott
Robert Gutierrez
Robin Green
Robin Ziperman and Bill Baker
Roger and MaryBeth France
Roger and Theresa Grover
Ron Rak
Ronald H Avery
Rosamonde McAtee
Rose Mirich
Roxy's Bottle Shop
Russ and Sydney Schnurr
Russ Berry
S.B. Clark Companies
Salida Business Alliance
Salida Chamber of Commerce
Salida Mountain Sports
Salida Mountain Trails
Salida Museum Association
Salida Sangha
Sally and Giff Kriebel
Samar and Michael Fay

Sandra Douglas
Sandra Egan
Sangre de Cristo Electric Association
Sara Jensen
Sarah and Doug Bibens
Sarah Reed
Schuckert Household
Scot Donato
Scott Dziura
Scott Hartman and Mary Helen Dunn
Scott T Downes
Sean Hines
SGM Engineering
Sharon Janik
Shawn Allison
Sheila Jackson
Sheila Townsend
Sherry Lana Thomas
Shirley Howe
Sig and Sandee Jaastad
Spark Provisions
St Rose of Lima Church
State Farm Employee Matching
Stefan and Marietta Bohn
Stella Humble
Stephen and Cheryl Straus-Witty
Stephen Keefer
Steve and Cea Tait
Steve and D'Ann Vits
Steve and Kathlyn Matre
Steve Jackson
Steven Burns
Su Casa! Furniture & Sleep Shop
Sue and John Sulley
Sue Bell and Alan Townsend
Sue Cobb and Kate Shea
Sue Mills
Sundance & Friends
Susan A. Kyle
Susan and Vic Kuklin
Susan Conroe
Susan D and Zackary Hughes
Susan Eininger
Susan Swartz-Regan
Susanna Spaulding
Svata Louda
Tara Pettit
Tara Printy
Taylor Sumners
TBK Bank

Ted and Penny Callahan
Teresa Peterson
Terese and Andrew Koransky
Terry and Barb Smith
Terry and Michael Barkett
Terry Stevens
The Colorado Health Foundation
The Colorado Trust
The Syzek and Reynolds Families
Theresa Casey
Theresa Ulrich
Thomas Hanselman
Thomas Horn
Tom and Joan Miller
Tom and Marnie Knapp
Tom Hittle
Tonia F Adams
TR and Janie Evans Family
Tracey Winter
Tracy E. Holmes
Trevor "Bones" Davis
Tyler Johnson
Valley Fellowship Church
Vicki and George Schuller
Vincent Su
Wayne and Pamela Jensen
Wendell Day
Wendy Hall
Wendy Weiner
William and Harriett Gould Foundation
William J Kowalski
Wish of a Lifetime from AARP
Wool Family Foundation
Xcel Energy
Yvonne Barnes
Zoe Shomaker

BUSINESS PARTNERS

Heart of the Rockies Radio
Wood's High Mountain Distillery
Bluebird Day Lofts
Bluebird Day Mercantile
Deerhammer Distillery
Diesslin Structures, Inc.
Innerlight Healthworks
The Trailhead